

Deck Mounted Therapy Bar

Details

Our Deck Mounted Therapy Bar is designed to be surface mounted and extend into the water of a therapy pool, commercial pool, or residential pool. Easy to install and remove. Features a reinforced, marine-grade aluminum core and sleeved with our signature high-impact-resistant polymer. Offers excellent durability in harsh environments. Withstands chlorine, saltwater, and ultraviolet rays for years to come.

Features

- High impact polymer exterior
- Reinforced aluminum interior
- Does not require grounding or bonding
- Tubing: 1.90" OD, 1.38" ID
- Wall Thickness: 0.25"

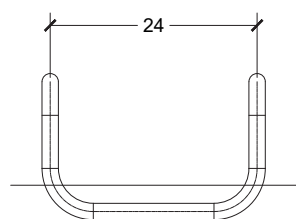
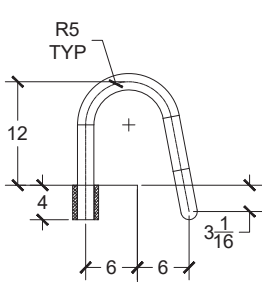


Models & Ordering

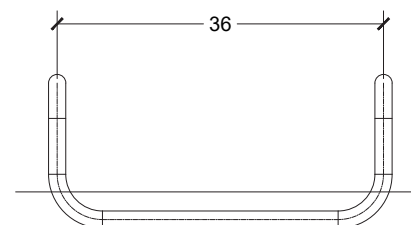
Model	Description	Shipping			
		Weight	L	W	H
DMT-24	24" W x 12" H	12 lbs.	25"	17"	14"
DMT-36	36" W x 12" H	13 lbs.	38"	17"	14"
DMT-48	48" W x 12" H	15 lbs	50"	17"	14"
DMT-60	60" W x 12" H	16 lbs	62"	17"	14"

All measurements on center. Escutcheons and anchor socket covers are included. When ordering, add the color to the end of the model number: (W) White, (B) Beige, (T) Taupe, (G) Light Gray, (GG) Graphite Gray, (BK) Black.

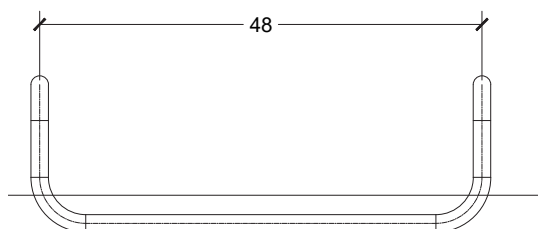
Dimensional Drawings



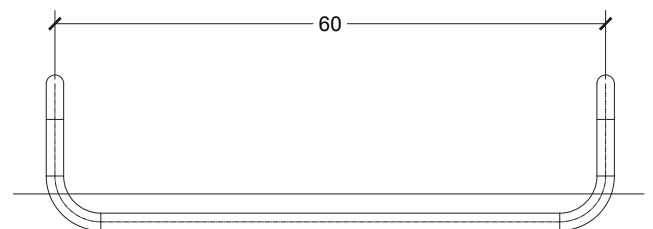
DMT-24



DMT-36



DMT-48



DMT-60